

VESSEL OVERVIEW

This Specification, together with the accompanying General Arrangement Plan, describes an unmanned multipurpose barge. The barge is to be built with a raking stem and transom stern. The hull shall be of fully welded construction, with a single freeboard deck continuous throughout the full length from stem to stern.

The barge is designed for unrestricted service and for special survey of the hull under classification as an unmanned deck cargo barge.

PRINCIPAL PARTICULARS

| | |
|--------------------------|-------------------------------------|
| YEAR OF BUILD | : August/October 2026 |
| PLACE OF BUILD | : Indonesia |
| FLAG | : Singapore |
| CLASS | : ABS |
| CLASS NOTATION | : ✕ A1 Barge; Unmanned |
| CLASS DESCRIPTION | : Deck Cargo and Ballast Tank Barge |

PRINCIPAL DIMENSIONS

| | |
|------------------------|--------------------------|
| LENGTH OVERALL | : 282.0' (85.95m) |
| BREADTH MOULDED | : 90.0' (27.45m) |
| DEPTH MOULDED | : 18.0' (5.49m) |
| DESIGN DRAFT | : 4.30 m |
| DECK LOADING | : 20 T/m ² |
| CLEAR DECK AREA | : 2357.55 m ² |
| GROSS TONNAGE | : 3431 |
| NET TONNAGE | : 1029 |

PLATING

| | |
|-------------------------|--------|
| DECK | : 18mm |
| BOTTOM | : 12mm |
| SIDE SHELL | : 14mm |
| LONGITUDINAL BHD | : 10mm |
| TRANSVERSE BHD | : 10mm |

ACCOMODATION

| | |
|--------------------|----------------------|
| WINCH HOUSE | : 1pcs x 4410 x 3657 |
|--------------------|----------------------|

Two skegs to be welded on the aft bottom portside and starboard

DECK FITTING

| | | |
|---------------------------|---|--|
| MOORING BOLLARD | : | 8 sets |
| FENDER ARRANGEMENT | : | Approx. tyre fenders 900mm dia. 200mm thick in size |
| TOWING BRACKETS | : | Towing brackets with a proof load of 80 metric tons Fair leads to be installed before the towing brackets |
| ANCHOR & WINCH | : | 1 x bow anchor 1 x anchor winch, driven by diesel motor, 10T |
| MANHOLES | : | Fifty six (56) manholes with ladder to be provided for each tank, Size of manhole to be 600mm x 400mm clear opening oval flush type, Studs and nuts to be of stainless steel |
| HATCH | : | 1 x hatch with ladder |
| INCLINED LADDER | : | 1 x inclined ladder for access to Eng & Pump room |
| NAVIGATION LIGHTS | : | 1 x set of electrical (battery & solar operated) navigation lights fitted c/w stands and battery boxes |

SAFETY

| | | |
|---------------------------|---|--|
| FIRE EXTINGUISHERS | : | Water Base: 2 Pcs x 9 Ltr CO2: 4 Pcs x 5 Ltr Foam: 1 Pcs x 9 Ltr |
| NORWEGIAN BUOY | : | 1 Pcs |

MACHINERY & EQUIPMENT

| | | |
|--|---|--|
| BALLAST PUMP | : | 2 x 300 m ³ /h, 20 m head, 1450 rpm motor driven |
| GENERATOR | : | 2 X 90 Kw, 113 KVA |
| BALLAST WATER MANAGEMENT SYSTEM | : | 1 x 350 m ³ /h, 45.5 kW, AC400V/3P/50Hz |
| DIRTY FUEL OIL TRANSFER PUMP | : | 1 x 2.2kW/1450RPM, 5m ³ /hr @33m head, 380-415V/3P/50Hz |
| MAIN SWITCHBOARD | : | AC 400V/50Hz/3P/3W |
| REVERSIBLE AXIAL-FLOW FAN | : | 1 x unit |
| PORTABLE SUBMERGED PUMP | : | 1 x 25 m ³ /h, with flexible suction/discharge hoses |

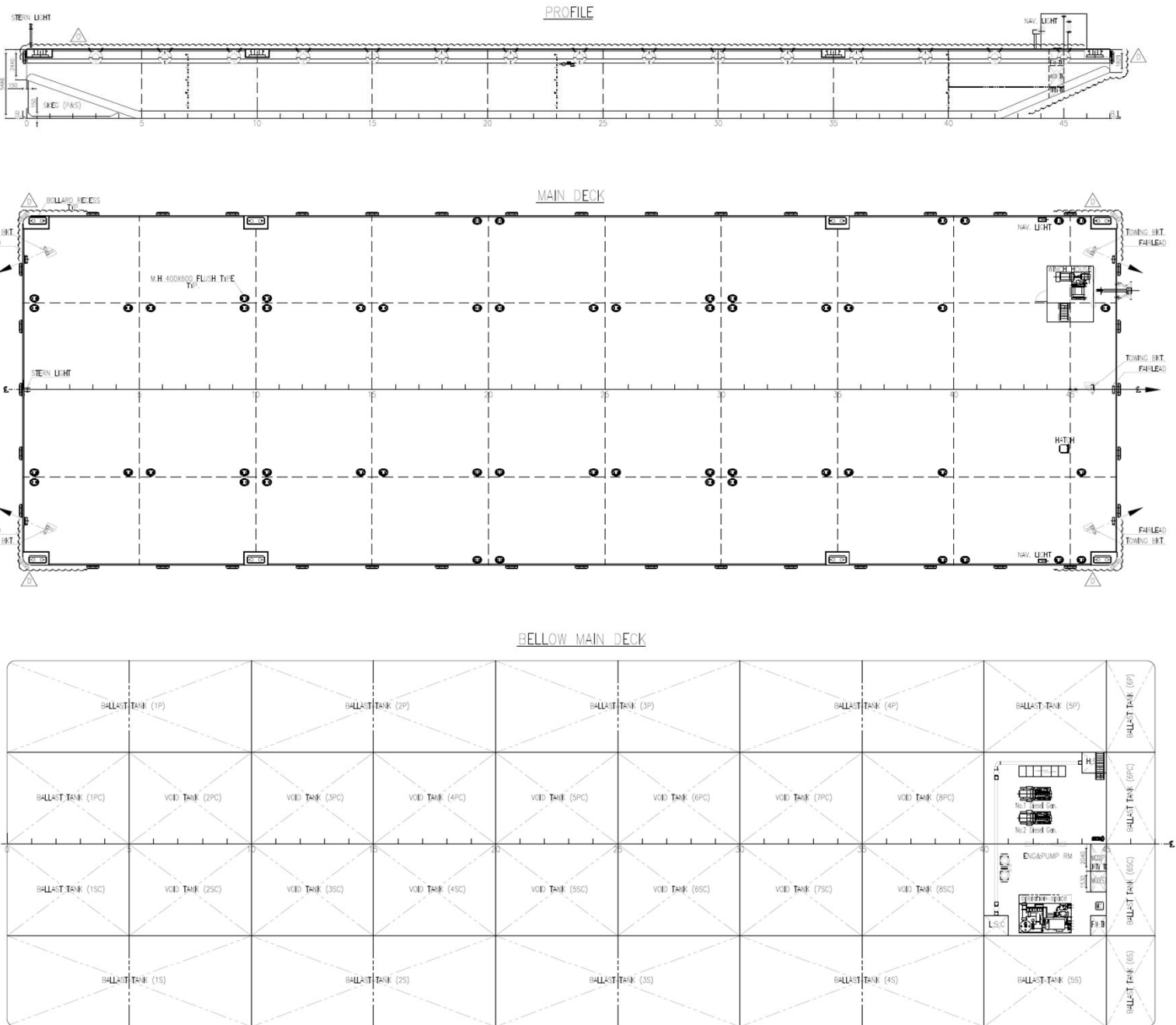
PAINTING

| | | |
|----------------------------|---|--|
| CATHODIC PROTECTION | : | 15 kg/ pc to be arranged in way of bilge, stem and fore area, and inside of all ballast tank |
| BLASTING | : | Shot blasted SA2.5 on both sides |
| ANTI FOULING | : | Five (5) year quality guarantee |

PIPING

| |
|--------------------------------------|
| TANK BALLAST SYSTEM |
| TANK VENTING SYSTEM |
| EXHAUST PIPE SYSTEM |
| SOUNDING PIPE SYSTEM |
| SEA WATER COOLING PIPE SYSTEM |

GENERAL ARRANGEMENT



PRINCIPAL DIMENSIONS

| | |
|--------------------|-----------------------------------|
| LENGTH (LOA) | 282' (85.953 M) |
| BREADTH (MLD) | 90' (27.45 M) |
| DEPTH (MLD) | 18' (5.49 M) |
| DESIGN DRAFT: | 4.30M |
| DECK LOADING: | 20 t/m ² |
| CLASS NOTATION: | +A1 Barge; Unmanned |
| CLASS DESCRIPTION: | DECK CARGO AND BALLAST TANK BARGE |